



Space Engineering Seminar
Space System Engineering
“Local BIRDS Program”

Joven C. Javier

September 07, 2017 12:10PM

LaSEINE 4th Floor Seminar Room

Laboratory of Spacecraft Environment Interaction Engineering (LaSEINE)
Kyushu Institute of Technology



What is Local BIRDS Program?



- *Local BIRDS Program* is a localized version of the kyutech's BIRDS Project.
- The same lean concept of cubesat development will apply which aims to lay down the foundation of space program in home countries by building, training and accumulating human resources in local universities in order to promote space research education that will lead to a flight model satellite launching.



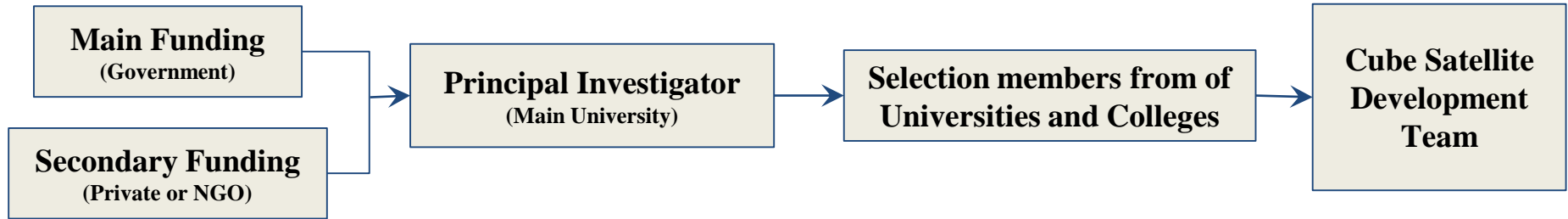
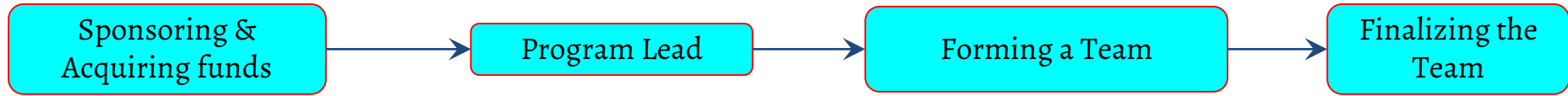
Objectives



- To Provide the opportunity of learning the entire process of satellite development from mission planning to disposal.
- To lay down the foundation of sustainable space program by accumulating human resources in universities and establishing electives and develop curriculum for space education as a course.
- To create networks of space enthusiast that will reach out the other universities and colleges to High School help them engaged exploring ideas and mission in space as means of solution to society's problem.

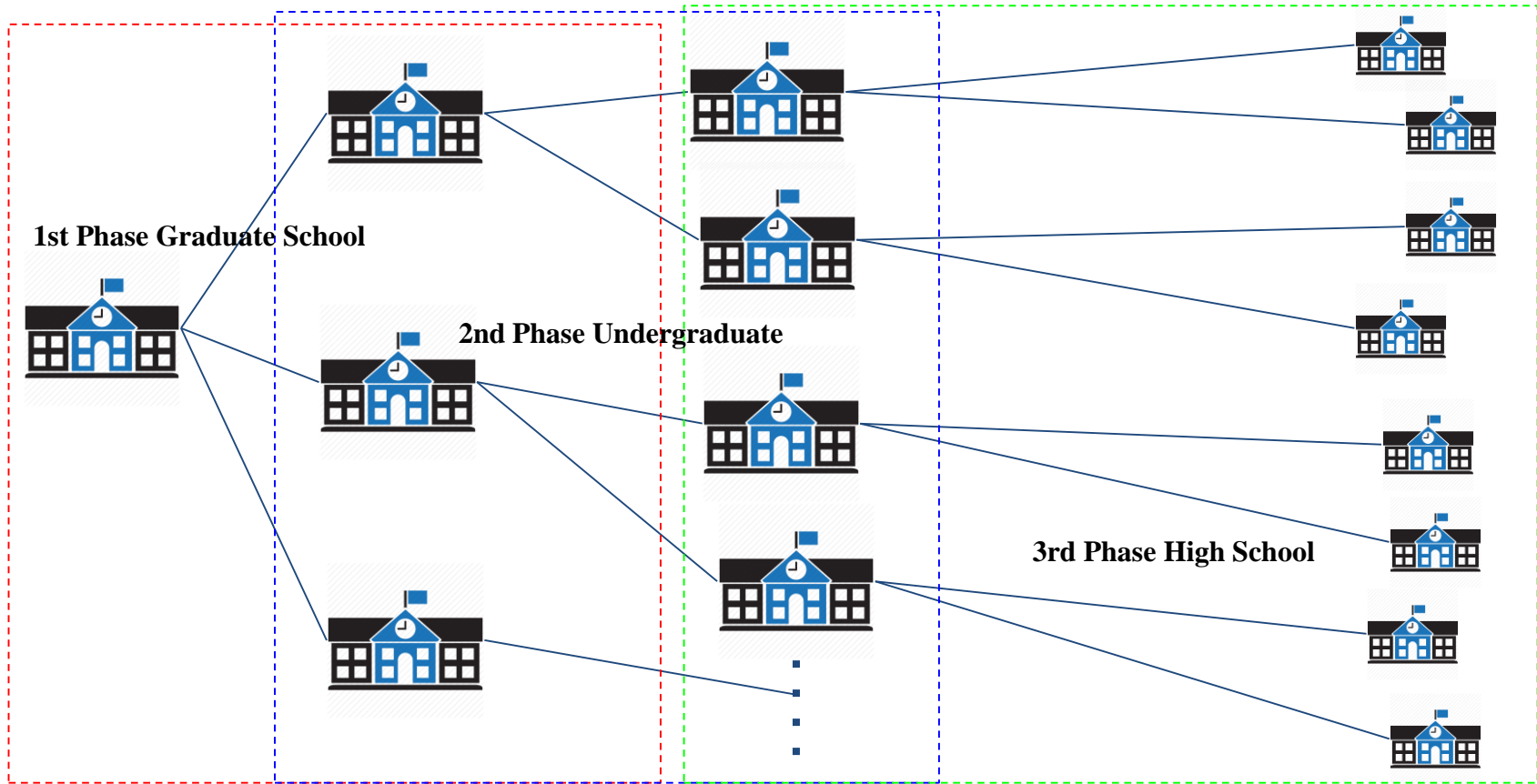


BIRDS Program localized Structure





BIRDS Program localized Structure





Sponsoring and Acquiring Funds



- Source of Program Funds
 - Government
 - Private Sector or NGO (Non-Government Organization)
 - International Organization

- For Government Funding there is a council that will monitor the progress and stages of deliberation will be conducted to assure that the projects is still on track of the road map



Sponsoring and Acquiring Funds



A Clear Program for Project Proposal must be well defined and explains which includes;

- a. Objectives and Targets
- b. How you will do it?
- c. Timeline
- d. How much is the Budget you need and how will you spend that budget?
- e. How will you assure that your program will succeed?



Deliberation Stages for Funding



- **Technical Panel**

Composed of Technically knowledgeable people about the subject matter which are invited by the council to examine if the program is feasible and progressive.

- **Governing Council**

Composed of Non-Technical people. Usually it is the stakeholders who will ask question to you on how things will go during the project implementation.

- **Executive Commission**

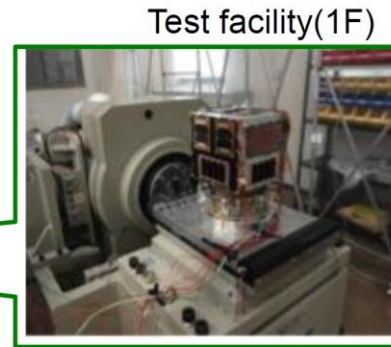
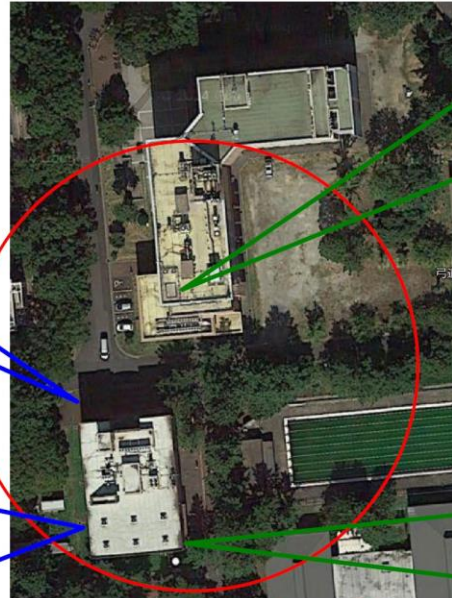
Composed of Higher Officials who will scrutinize the program everything from the top .



Program lead



- **Principal Investigator or Project Leader**
The one will overall sees the project and will responsible for the program progress.
- **Assistant Project Lead and Faculty members**
Research Associate and Assistant Professors from the University.
- **Secretariat and Project Management Staff**
Will handle documentation, Procurement and other Budgetary matters

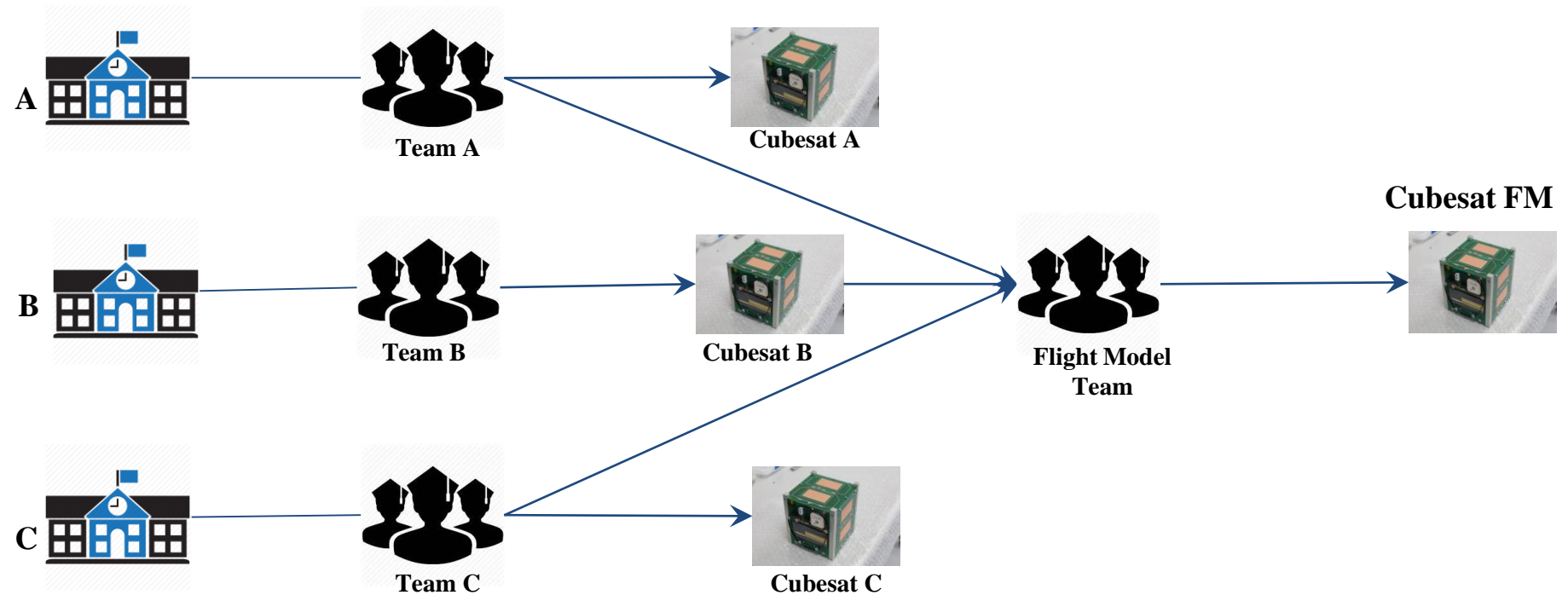


Universities

Selected Students

Engineering Model
(Cubesat A,B & C has unique Mission)

Cubesat FM



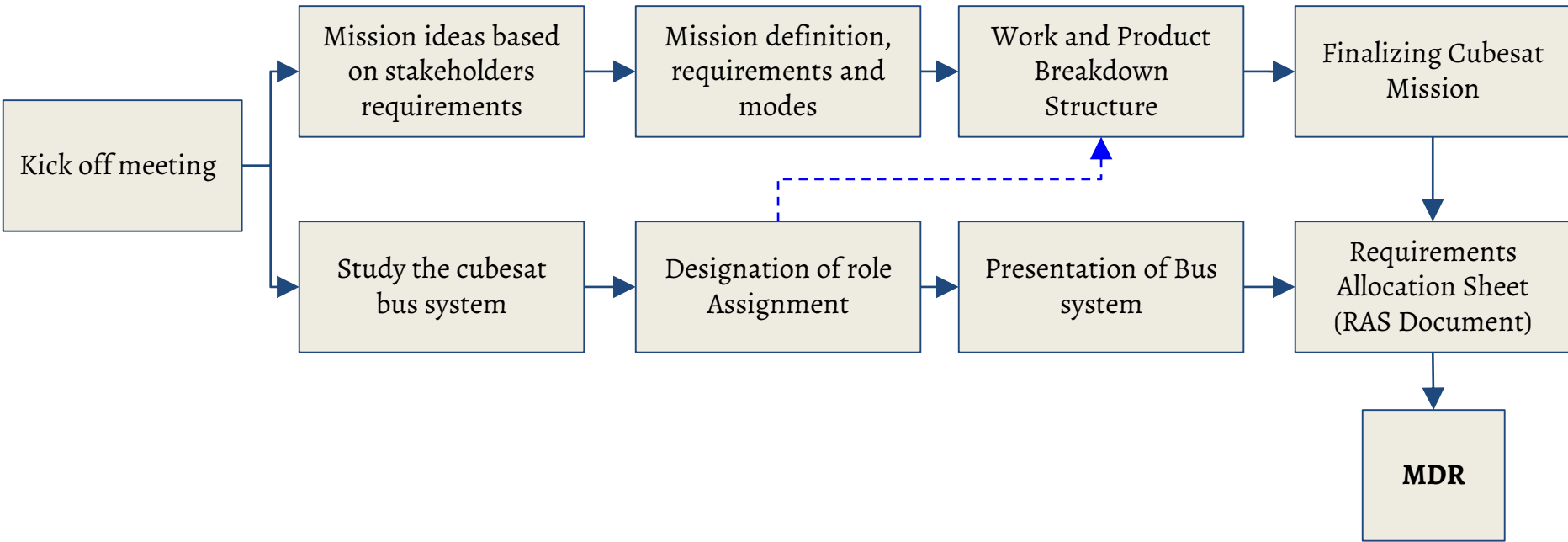
Icons: https://www.google.co.jp/search?tbm=isch&q=university+icon&chips=q:university+icon,g_2:campus&sa=X&ved=0ahUKEwjV9YDCh5HWAhVEeWnKHY9uDKUQ4YIKygA&biw=1600&bih=834&dpr=2#imgrc=An0JZTdReVBEGM:
https://www.google.co.jp/search?biw=1600&bih=785&tbm=isch&sa=1&q=project+manager+icon&oq=Project+&gs_l=psy-ab.1.0.0i67k114.47398.50504.0.53037.8.8.0.0.0.0.123.840.3j5.8.0....0...1.1.64.psy-ab..0.8.836.gCZRO4I38yo#imgrc=IHI-M-kIAcL3pM:
https://www.google.co.jp/search?biw=1600&bih=834&tbm=isch&sa=1&q=boss+icon&oq=boss+&gs_l=psy-ab.1.0.0i67k1j0i0i67k1j0.10418.13349.0.15329.32.14.0.0.0.0.127.1328.6j7.13.0....0...1.1.64.psy-ab..25.5.557.0.NKm3Eb2T73s#imgrc=lmvijDLdcz81BM:



Cube Satellite Development - MDR

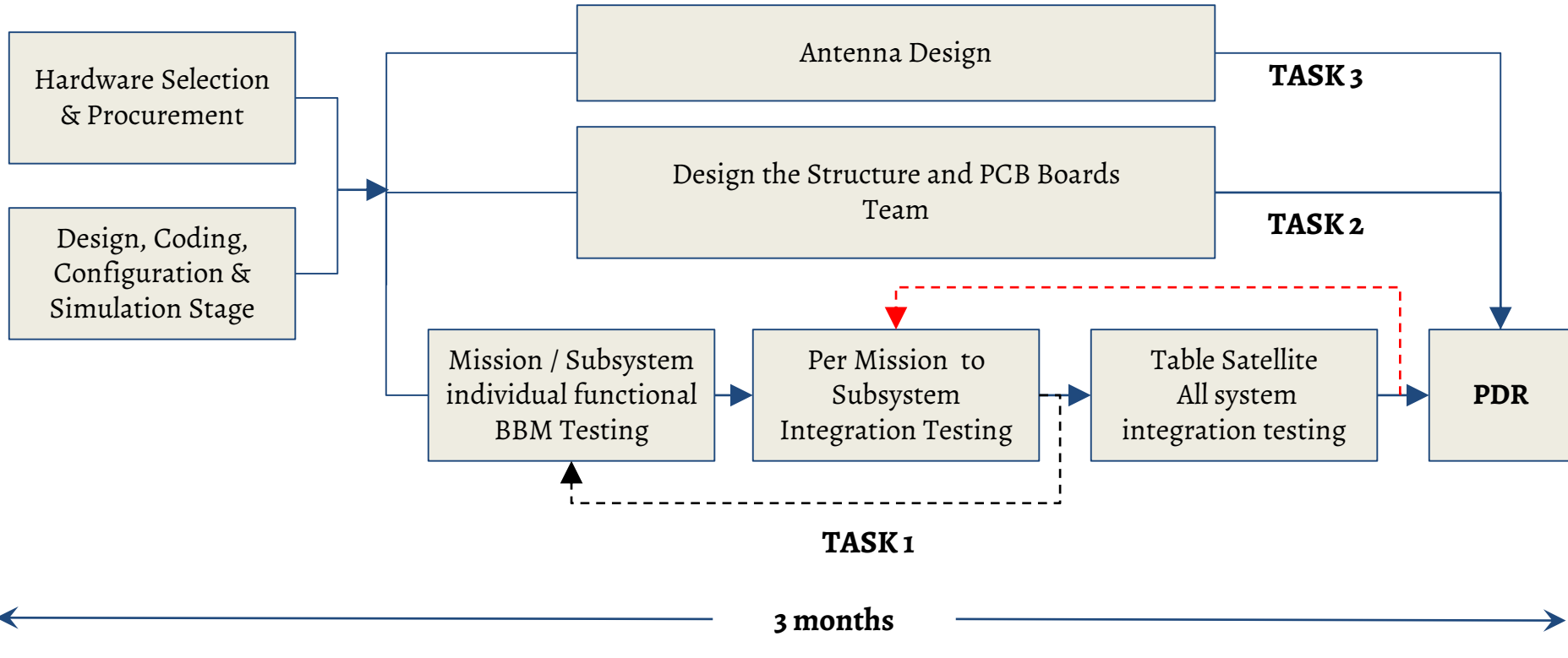


2 months



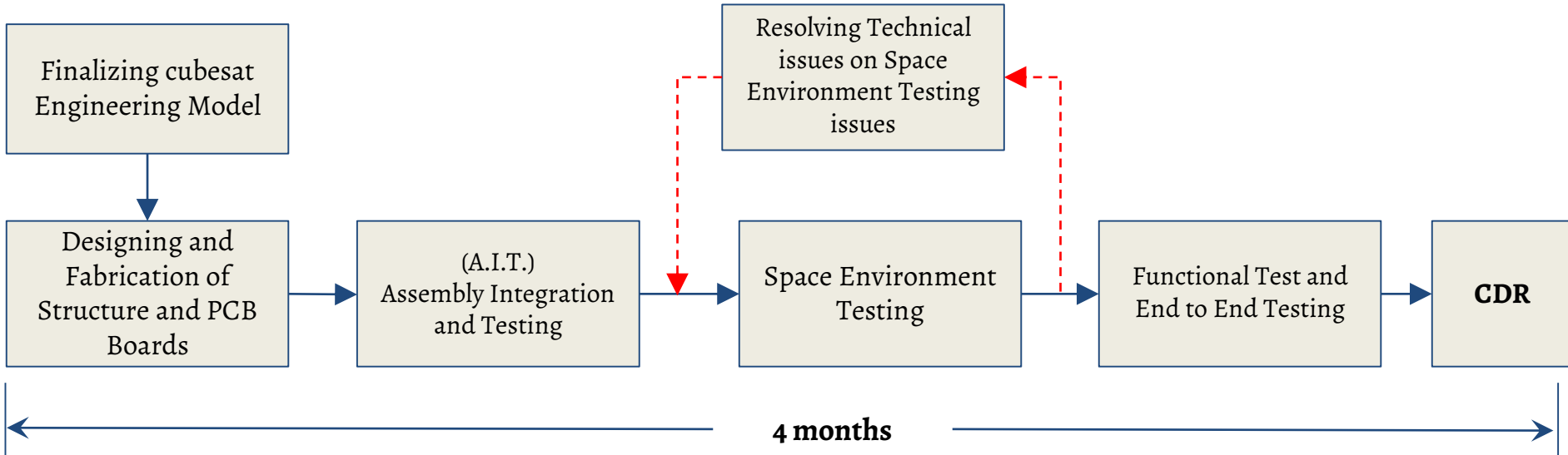


Cube Satellite Development - PDR



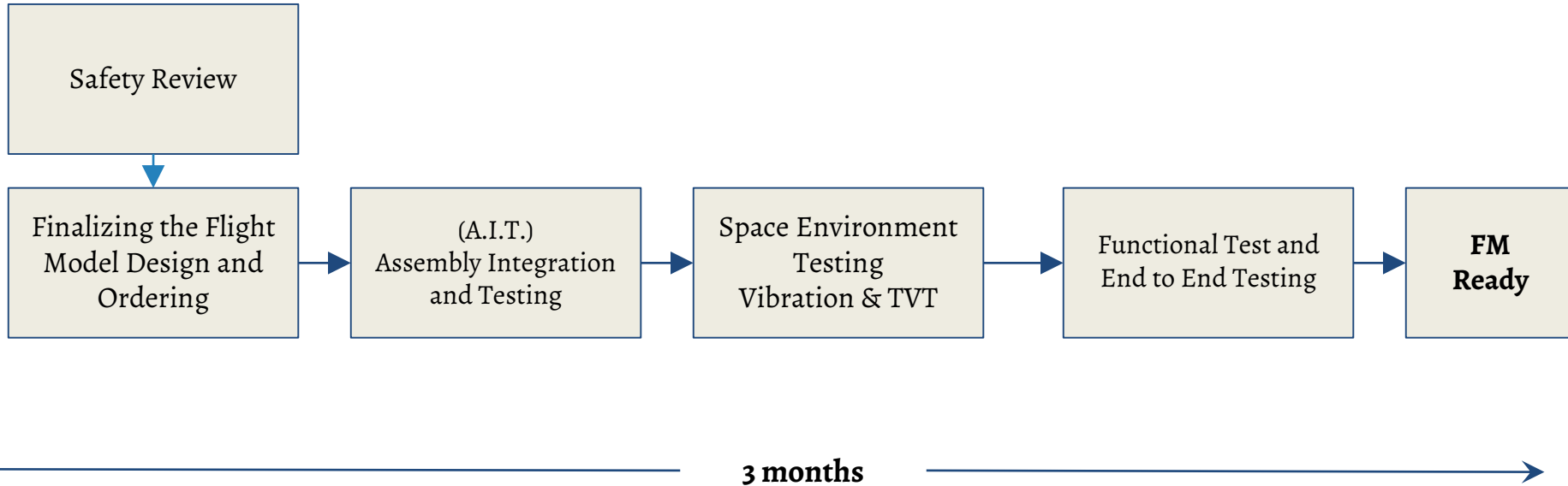


Cube Satellite Development - CDR





Cube Satellite Development - CDR





Initial Conclusion



- This Program is in the infant stage of idea but its possible and feasible to implement because kyutech did it already
- Funding may one of the hardest part in the beginning
- The Product of this Program is to sustain the space program in the country either by establishing a National Space Agency or Establishing a Space Industry by making business or proposing some potential business to existing big private company in your home country



Thank You

- End of Presentation -

Laboratory of Spacecraft Environment Interaction Engineering (LaSEINE)
Kyushu Institute of Technology